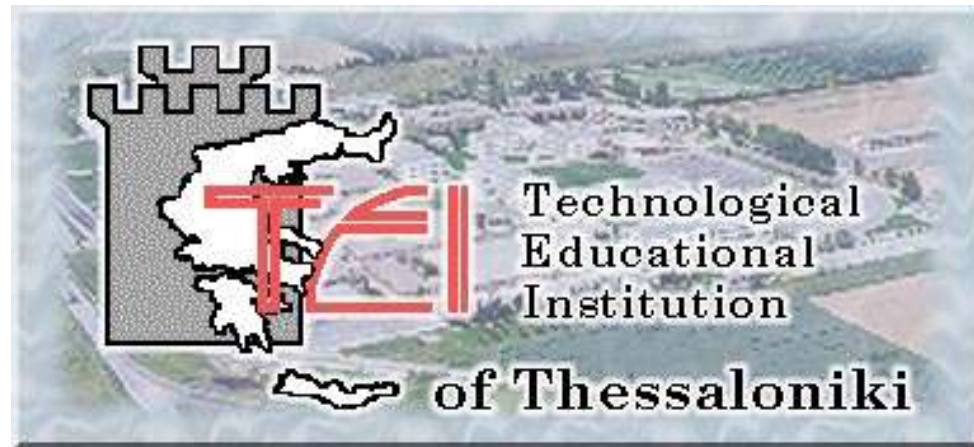


# ATEI



**Alexander Technological Educational  
Institution of Thessaloniki**

[www.teithe.gr](http://www.teithe.gr)

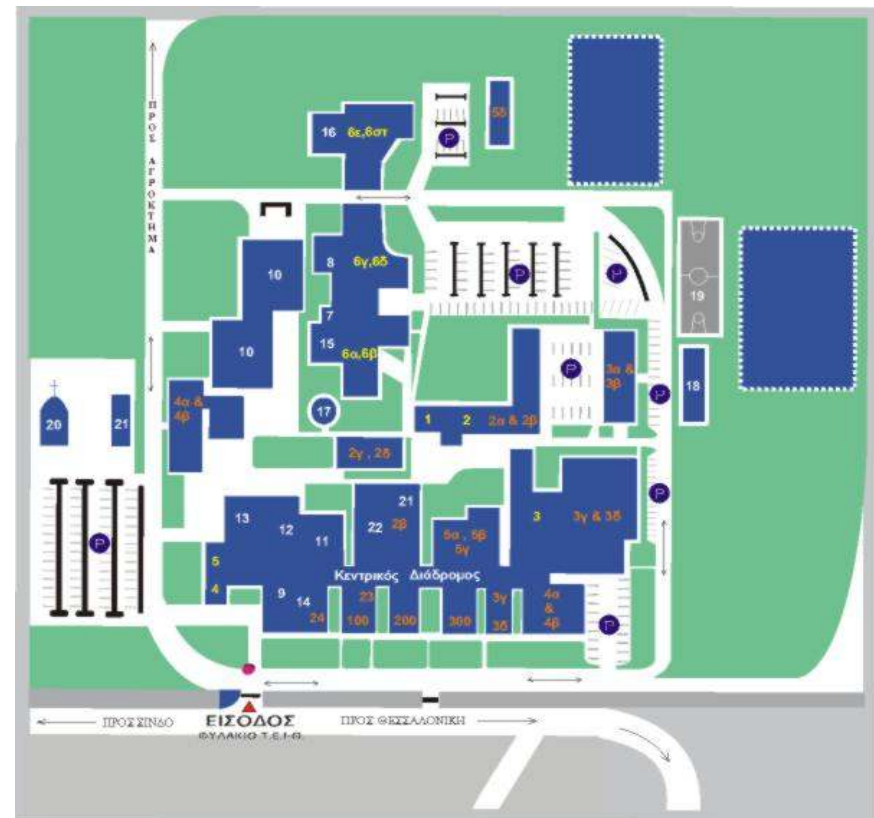
[www.socrates.teithe.gr](http://www.socrates.teithe.gr)

# About ATEI

- ◆ Established in **1983**
- ◆ **Student population** approximately **28.000**
- ◆ **430 members** of permanent educational staff
- ◆ A large number of **Part-time** educational staff
- ◆ About **250 members** of administrative staff
- ◆ **Fourth position** among the Greek Educational Establishments

# Location

- ◆ ATEI is located in area of approximately **425 acres**
- ◆ Near the village of **Sindos**
- ◆ At a distance of **17 kilometers** from the centre of **Thessaloniki**



# Building Infrastructure

- ◆ Classrooms, Laboratories & Staff Offices
- ◆ 2 big amphitheatres & smaller ones in each department
- ◆ A Central Library & smaller ones in each School
- ◆ Career Service Office
- ◆ Sports Grounds
- ◆ A Publishing Centre
- ◆ A Farm
- ◆ A Health Centre
- ◆ A refectory & a restaurant

# Academic Staff

Members of teaching staff work full-time or part-time & are classified into three grades:

- **Professor**
- **Associate Professor**
- **Assistant Professor**
- **Lecturer**

according to their academic qualifications, teaching & professional experience

There are also technical supporters employed in lab work

# Objectives

- ◆ To provide a type of education based both in **theory & practical approach**
- ◆ To keep a **close relationship** with the relevant productive units & the different sectors of economy in the area
- ◆ To **co-operate** with other academic institutions, relevant bodies & services in Greece & abroad for the benefit of achieving their aim
- ◆ To run **research projects** on subjects of applied technology



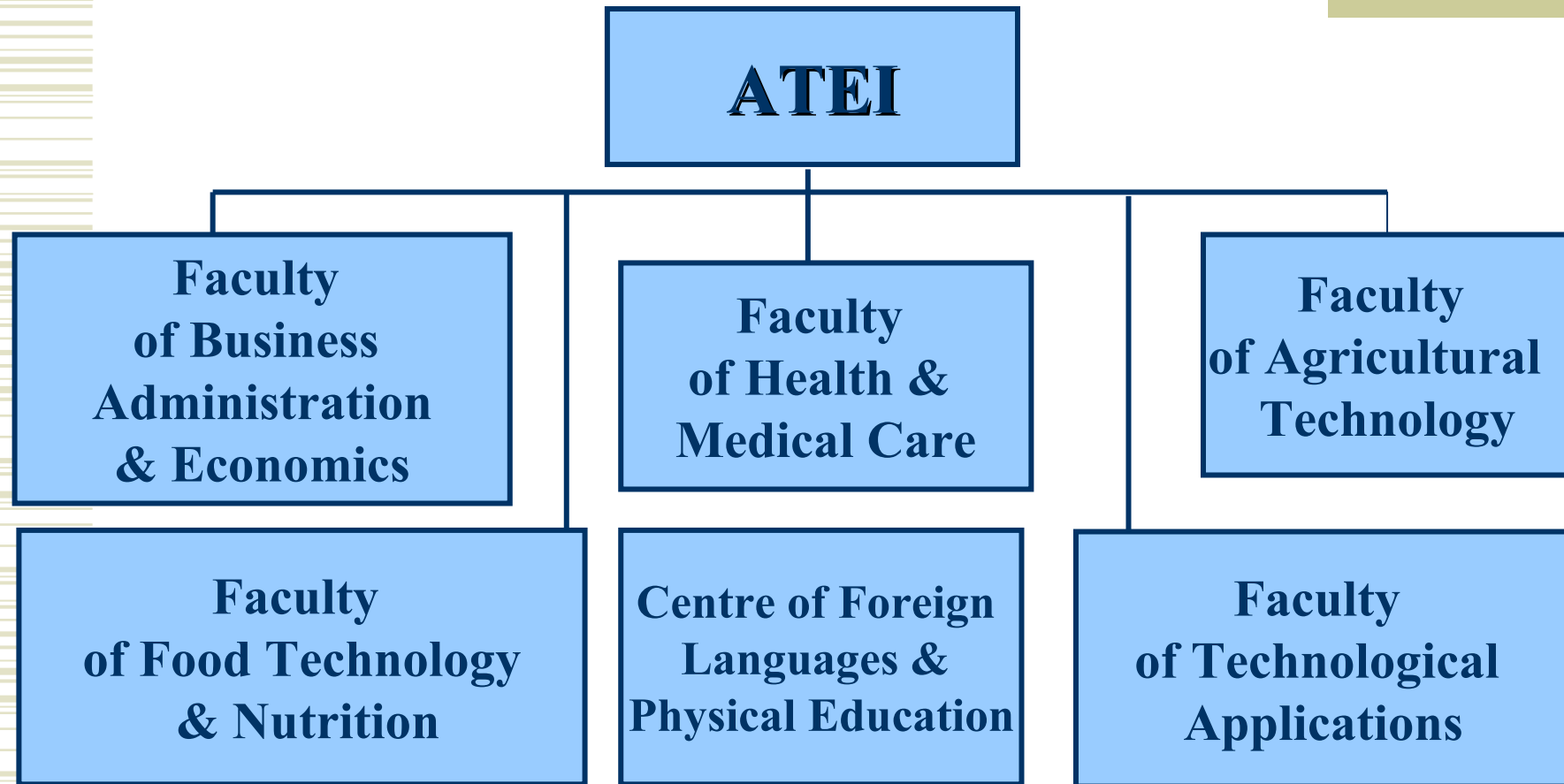
# Bachelor of Science (BSc)

- ◆ 4 years of study - totally 240 ECTS
- ◆ 6 semesters obligatory courses
- ◆ Courses: Theory, tutorials, labs (2+2+2 ECTS) \* 5
- ◆ 7<sup>th</sup> semester optional courses
- ◆ 1 final year project
- ◆ 6 months obligatory industrial training
- ◆ Intake twice a year

# SOCRATES/ERASMUS OFFICE

- ◆ **90** Erasmus incoming students (2005-2006)
- ◆ **107** Erasmus outgoing students (2005-2006)
- ◆ **45** Professors of Teaching Staff Mobility
- ◆ **12** Professors of Organizing Mobility
- ◆ About **135** Universities as Exchange Partners
- ◆ **ECTS System** – Full Academic Recognition of Erasmus studies abroad

# Academic Structure





# Faculty of Business Administration & Economics

1. Department of Accounting
2. Department of Library Science & Information Systems
3. Department of Tourism Management
4. Department of Marketing & Advertising



# Faculty of Health & Medical Care



1. Department of Aesthetics & Cosmetology
2. Department of Early Childhood Care & Education
3. Department of Medical Laboratory Studies
4. Department of Midwifery
5. Department of Nursing
6. Department of Physiotherapy



# Faculty of Agricultural Technology

1. Department of Farm Management
2. Department of Plant Production
3. Department of Animal Production



# Faculty of Food Technology & Nutrition

1. Department of Food Technology
2. Department of Nutrition & Dietetics

# Faculty of Technological Applications

1. Department of Automation
2. Department of Informatics
3. Department of Vehicle Technology
4. Department of Electronics
5. Department of Civil Infrastructure Engineering
6. General Department of Applied Sciences

# Branches of Alexander Technological Educational Institute of Thessaloniki

- ◆ Department of Clothing Design and Technology (Branch of Kilkis)
- ◆ Department of Fisheries and Aquaculture Technology (Branch of N. Moudania)
- ◆ Department of Standardization & Transportation of Products-Logistics (Branch of Katerini)